



Growing and learning our way

SUPPORT GUIDE



“Where every child has the opportunity to reach their greatest potential”

WWW.GLOWKIDS.ORG.NZ

1. FORWARD

GlowKids is a not-for-profit parent led charitable trust established in 2011. GlowKids provides intensive specialised programmes for children who have Sensory and / or Physical Disabilities.

At GlowKids we support our children and their whanau by empowering them with knowledge, skills, confidence, and hope. This guide was created to gather relevant information (0-6 years) to help you become better equipped to navigate through to be a positive and powerful force in your child's development.

Note that the information in this guide is intended as a starting and reference point for families, and there will be variations around eligibility for certain services and funding (according to individual circumstances).

“knowledge is power”

2. Contents

1. Forward
2. Contents
3. Acronyms / terms
4. Your rights
5. Disability sector 'road map'
6. MOE
7. Whaikaha (Ministry of Disabled People)
8. MSD
9. ACC
10. NGO'S
11. Grants and funding
12. Directory
13. Directory for Conductive Education Providers NZ-wide

3. ACRONYMS / TERMS

ACC - Accident, Compensation Corporation (government agency)

ADD - attention deficit disorder

ADHD - attention deficit hyperactive disorder

ASD - autism spectrum disorder

ADHB - Auckland District Health Board

CDS - Child Development Services

CE - Conductive Education

CP - Cerebral Palsy

DHB - District Health Board

DSS - Disability Support Services NZ

ECE - Early Childhood Education

EIT - Early Intervention Teacher

EIS - Early Intervention Service

ESW - Educational Support Worker (teacher aide 0-6 years)

IF - individualised funding

IEP (IP) - individual education plan

MOE - Ministry of Education (government department)

Whaikaha - Ministry of Disabled People (government department)

MSD - Ministry of Social Development (government department)

NASC - Needs Assessment Services Coordinator

NHI - National Health Index (Identity number through Te Whatu Ora)

NGO - Non-Government Organisation (generally not-for-profit organisations)

NSN - National Student Number

OT - Occupational Therapist

ORS - Ongoing Resourcing Scheme (funding for school)

PP – Paraprofessional (school employees who assist in supporting students under the supervision of a licensed professional. Also known as a Teacher Aide)

RTL - Resource Teacher of Learning and Behaviour

SENCO - Special Education Need Coordinator (school)

SHHF - School High Health Needs Fund (funding option for school)

SLT - Speech Language Therapist

VNT - Visiting Neurodevelopmental Therapist

WINZ - Work and Income NZ (government department)

4. YOUR RIGHTS

Education and Training Act 2020: All students have the right to attend school fulltime.

- **Section 33** of the Education and Training Act explicitly includes the right of all enrolled students to attend school during all the hours the school is open for instruction.
- **Section 34** clarifies that students with special education needs have the same rights to attend school during all the hours the school is open as those who do not.
- These sections make it clear that all students, including those with learning support needs, have the right to attend school whenever the school is open.
- **Section 42** enables a student's parent or full-time caregiver, their principal, and the Secretary for Education to **reduce hours of attendance as part of a transitional attendance plan**, when the particular needs of the student requires this. The plan must be requested by the parents only. It must be in the child's best interests, and evidence will be required from a medical professional.

The plan can be for no more than six months duration but can be renewed, once only, for a further period of up to six months. The renewal must be initiated by the parent, and must be agreed by them, the principal, and the Secretary for Education to be in the best interests of the student. However, the evidence from a medical professional is not required for the renewal.

United Nations Convention on the Rights of Persons with Disabilities (UNCRPD)

Article 24: Right to inclusive education.

- Education should be inclusive at all levels, including pre-school, primary, secondary, and post-secondary (college, university, vocational training, adult education, etc..)
- Should be available to everyone in the communities in which they live.
- Should be compulsory and free at primary level and states should work towards free secondary education.
- All people with disabilities have the right to quality education on the same basis as others. They should not be discriminated against in any way and must offer reasonable accommodation and adaptation as needed.
- Achieving this involves changing the whole education system, including culture, policy and practice, and all aspects of education need to be looked at and changed where necessary, such as legislation, funding, design, delivery, and monitoring.

New Zealand Disability Strategy 2016-2026 Outcome 1: Education

Disabled people are consulted and involved in development and implementation of policies and legislation about education.

Access to mainstream education must be inclusive - policy, practice, and pedagogy.

Right to high quality, accessible and available services.

Inclusive education must be a core competency for all teachers.

Decision making must be based on data and good evidence.

Health and Disability Commissioner (HDC)

The HDC facilitates the Health and Disabilities Act, 1994. It is an independent agency established to promote and protect the rights of consumers as set out in the Code of Health and Disability Services Consumers' Rights. This includes resolving complaints in a fair, timely, and effective way.

When you use a health or disability service in New Zealand, you have the protection of a Code of Rights. The Code of Health and Disability Services Consumers' Rights provides the following 10 rights:

Right 1 - The right to be treated with respect.

Right 2 - The right to freedom from discrimination, coercion, harassment, and exploitation.

Right 3 - The right to dignity and independence.

Right 4 - The right to services of an appropriate standard.

Right 5 - The right to effective communication.

Right 6 - The right to be fully informed.

Right 7 - The right to make an informed choice and give informed consent.

Right 8 - The right to support.

Right 9 - Rights in respect of teaching or research.

Right 10 - The right to complain. And have your complaint taken seriously.

For more information around the Health and Disability Commissioner, please go to www.hdc.org.nz

For a more comprehensive look at the code of rights, visit

<https://www.hdc.org.nz/your-rights/about-the-code/code-of-health-and-disability-services-consumers-rights/>

For information on advocacy supports, go to Nationwide Health & Disability Advocacy Service Website: www.advocacy.org.nz (Freephone 0800 555 050)



HEALTH & DISABILITY COMMISSIONER
TE TOIHAU HAUDRA, HAUĀTANGA

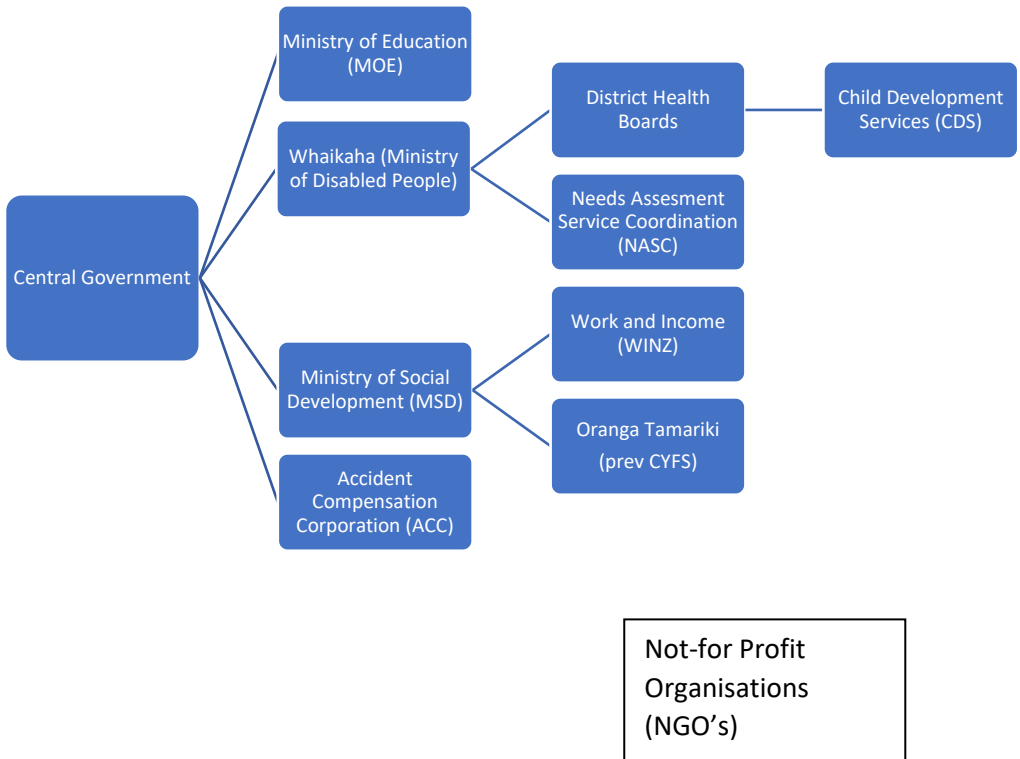
Your Rights when receiving a Health or Disability Service

- **Respect**
You should be treated with respect. This includes respect for your culture, values and beliefs, as well as your right to personal privacy.
- **Fair Treatment**
No one should discriminate against you, pressure you into something you do not want or take advantage of you in any way.
- **Dignity and Independence**
Services should support you to live a dignified, independent life.
- **Proper Standards**
You have the right to be treated with care and skill, and to receive services that reflect your needs. All those involved in your care should work together for you.
- **Communication**
You have the right to be listened to, understood and receive information in whatever way you need. When it is necessary and practicable, an interpreter should be available.
- **Information**
You have the right to have your condition explained and to be told what your choices are. This includes how long you may have to wait, an estimate of any costs, and likely benefits and side effects. You can ask any questions to help you to be fully informed.
- **It's Your Decision**
It is up to you to decide. You can say no or change your mind at any time.
- **Support**
You have the right to have someone with you to give you support in most circumstances.
- **Teaching and Research**
All these rights also apply when taking part in teaching and research.
- **Complaints**
It is OK to complain – your complaints help improve service. It must be easy for you to make a complaint, and it should not have an adverse effect on the way you are treated.

If you need help, ask the person or organisation providing the service. You can contact the local advocacy service on 0800 555 050 or the Health and Disability Commissioner on 0800 11 22 33 (TTY).

5. DISABILITY SECTOR ROAD MAP

The disability sector is made up of several government-led ministries and multiple NGO's (Non-Government Agencies, such as GlowKids). This illustration shows the relationship between government, ministries, and NGO's



6. MINISTRY OF EDUCATION (MOE)

The Ministry of Education (MOE) is the government's lead advisor on the New Zealand Education system, shaping direction for sector agencies and providers¹. In New Zealand, all children have the right of enrolment at their local mainstream school. Therefore, one of MOE's roles is to provide support for children with special needs. The MOE does this by providing the following services / funding:

- Early Intervention Services (EIS)
- Ongoing Resourcing Scheme (ORS) - funding for school
- Resource Teacher of Learning and Behaviour (RTLB)
- Special Education Grant (SEG)
- Special Schools
- Special Education Needs Coordinator (SENCO)

Early Intervention Service

Early Intervention provides support for children with additional needs, and their parents, whānau and kaiako from birth until the child starts school. Early intervention teams work with families and early childhood educators who ask for help when they are concerned about the learning and development of young children.

Early Intervention Services can be provided by Ministry of Education teams or by contracted Early Intervention Providers.

¹ www.education.govt.nz/header-utilities/aboutus/

² Disability connect disability support guide

The different types of specialists and supports available include:

- Early Intervention Teachers,
- Education support workers,
- Kaitakawaenga (Māori cultural advisors),
- Psychologists,
- Speech-language therapists.
- Support for children who are blind or low vision is provided by the Blind and Low Vision Education Network NZ (BLENNZ).

Early intervention specialists work together as a team to develop a plan that supports the child's participation and learning. The team includes parents, whānau, kaiako, and any other specialists and agencies, as necessary.³

Early Intervention providers in Auckland:

- Autism NZ – for more information please visit <https://www.autismnz.org.nz/>
(09) 846 0913 or 0800 AUTISM (288 476)
- CCS Disability Action - for more information please visit: <https://ccsdisabilityaction.org.nz/services/how-can-we-help/early-intervention/>
Or phone: 09 625 9378 or 0800 227 2255

³ <https://www.education.govt.nz/early-childhood/teaching-and-learning/learning-tools-and-resources/early-intervention/>

- MOE – for more information please visit:
<https://www.education.govt.nz/early-childhood/teaching-and-learning/learning-tools-and-resources/early-intervention/>
Or phone: 0800 622 222
- Ohomairangi – for more information please visit:
<https://www.ohomairangi.co.nz/early-intervention-service.html>
Or phone: 09 263 0798

School High Health Needs Fund (SHHNF) **starting school**

The School High Health Needs Fund supports students at school and kura who have significant health conditions. The fund pays for a teacher aide when the student has a high health need and care and support is needed for more than 6 weeks⁴.

For more information please visit the Ministry of Education website:

<https://www.education.govt.nz/school/student-support/special-education/school-high-health-needs-fund/>

⁴ <https://www.education.govt.nz/school/student-support/special-education/school-high-health-needs-fund/>

Ongoing Resourcing Scheme (ORS) **Starting school**

Children who have high or very high needs may be able to access ORS funding. There is a comprehensive list of eligibility criteria for student to qualify for ORS funding. The criteria are divided into two distinct categories (high and very high needs), in which there are 9 specific requirements. To receive ORS funding, the student must have extreme or severe difficulty with either learning, hearing, seeing, moving about, or using language and social communication, or a combination of moderate-to-high difficulty with learning plus any two of the above difficulties at the moderate to high level⁵.

ORS funding may help pay for teacher aide time, resources for the classroom and specialist services such as OTs, Physiotherapy, Educational Psychologists, SLTs, Behaviour Support, and Assistive Technology (such as hearing devices, specialised seating, and computer aids).⁶

For more information please visit the Ministry of Educations website:
<https://www.education.govt.nz/school/student-support/special-education/ors/>

⁵ www.education.govt.nz/header-utilites/about-us/

⁶ Disability connect disability support guide

Special Schools

If your child has very high needs, choosing a Special School may be an option for your child.

Some of the Special Schools in Auckland are:

Arohanui Special School – Te Atatu South

<https://www.arohanui.school.nz/>

Central Auckland Specialist School – Central Auckland

<https://www.cass.school.nz/>

Mt Richmond School – Otahuhu

<http://www.mtrichmondschool.co.nz/>

Oaklynn Special School – New Lynn

<http://www.oaklynn.school.nz/>

Parkside School – Pukekohe

<http://35.208.90.232/~parkside/>

Rosehill School – Papakura

<https://www.rosehill.school.nz/>

Sir Keith Park School – Mangere

<https://www.skp.school.nz/>

Sommerville School – Panmure

<https://www.sommerville.school.nz/>

Wairau Valley School – Glenfield

<https://www.wvss.school.nz/>

Wilson School – Takapuna

<https://wilson.school.nz/>

Some Auckland mainstream schools with specialist units

Endeavour Centre

<https://www.mrps.school.nz/endeavour-centre>

Le Va Inclusive Centre

<https://www.papatoetoe-south.school.nz/our-school/our-programmes/>

Special Education Needs Coordinator (SENCO) *Starting school*

Most schools have a SENCO. This is typically a staff member within the school who has many years of teaching experience. The SENCO is involved in the development of the Individual Education Plan (IEP) and assessing the needs of the child, as well as coordinating appropriate resource, supports and services. The aim of this is to ensure that the child is able to get the most out of the school curriculum.⁷

Transitioning to school, planning and organisation

- Start thinking about transitions well in advances, 6-12 months before starting date.
- Externalise your thoughts - speak to other parents, friends, and family. Use social media such as Facebook, local community pages, school Facebook pages, Neighbourly, etc., to get a sense of school culture.
- Be clear about your expectations for the school, your child's needs, your family's vision and goals for your child, effective strategies and tips to support your child.
- Plan visits - more than one at different times of the day, learning time and break times.
- Discuss with team and make a decision (mainstream or special school options).
- The Early Intervention Teacher leads the ORS application, transition planning and process with family and team input, beginning at least 4 months before school beginning date.

⁷ Disability connect disability support guide

7. Whaikaha (Ministry of Disabled People)

Whaikaha (Ministry of Disabled People) funds a range of supports for people with disabilities, to help them live an everyday life in their communities.⁸

Whaikaha contract Needs Assessment Service Coordination (NASC) organisations throughout New Zealand (Taikura Trust is the Auckland NASC). To access the range of Whaikaha funded disability support services, an application needs to be made to a NASC for a 'needs assessment'. A referral can be made by anyone (including parents themselves). However, a confirmation of diagnosis is usually required by a doctor or a paediatrician.⁹

Child Development Service

The Child Development Service is a non-medical, multidisciplinary, allied health and community-based service who will work with you and your child to determine how best to encourage your child's development. Child Development Services are community-based and will usually take place in your home or sometimes in other community settings.¹¹

⁸ <https://www.tewhātuora.govt.nz/our-health-system/eligibility-for-publicly-funded-health-services/eligibility-explained>

⁹ Disability Connect, disability support guide

¹¹ <https://www.whaikaha.govt.nz/types-of-support/specific-disability-services/child-development-services>

Whaikaha (Ministry of Disabled People) funds a range of supports for people with disabilities.

Whaikaha funded disability supports include:

- Home and Community support (e.g. household management or personal care)
- Equipment and Modification services (e.g. funding for equipment such as wheelchairs; home modifications such as ramps etc)
- Hearing and Vision services
- Respite and Carer support
- Autism Spectrum Disorder support

Equipment and Modification Services

The Ministry's Equipment and Modification Services provide free or subsidised equipment and modifications to people with disabilities.

Equipment and Modification Services (EMS) cover:

- equipment
- housing modifications
- vehicle purchase and modifications.

For more information visit: <https://www.whaikaha.govt.nz/get-involved/information-for-service-providers/equipment-and-modification-services>

Hearing and Vision Services

Whaikaha funds a range of Hearing and Vision Services. These services can help with the cost of:

- hearing aids
- cochlear implants
- children's spectacles
- contact lenses.

Children's Spectacle Subsidy - Children with vision problems may be able to get this subsidy for examinations, frames, lenses, eye patches and repairs.

Equipment for people who are blind or have reduced vision.

Hearing services.

If you or your child has hearing loss, find out what services are out there to help.¹⁰

For more information visit: <https://www.whaikaha.govt.nz/types-of-support/specific-disability-services/hearing-and-vision-services>

¹⁰ <https://www.health.govt.nz/your-health/services-and-support/disability-services/types-disability-support/hearing-and-vision-services>

Needs Assessment and Service Coordinator services (NASC)

Before being able to access most funding avenues, your best course of action is to get in touch the local Needs Assessment and Service Coordination Service (NASC). NASCs are organisations contracted by Whaikaha to work with disabled people and their family, whanau aiga or carers to:

- Identify their strengths and support needs
- Outline what disability support services are available
- Determine their eligibility for Ministry-funded support services

NASCs allocate Ministry-funded disability support services (*Carer Support, Individualised Funding etc.*), and help with accessing other supports. These services are then delivered by their respective service providers. NASCs are contracted by the Ministry's Disability Support Services unit. It is their job to ensure that the support and services allocated to you are fair and fit within the disability support service budget.¹¹

Taikura Trust

Taikura Trust is the local NASC for the greater Auckland region (from Mercer to Wellsford). They are a not-for-profit organisation.

For more information please visit: <https://www.taikura.org.nz/>

¹¹ <https://www.whaikaha.govt.nz/assessments-and-funding/who-can-get-support>

Needs Assessment:

This is the first step towards identifying your child's disability support needs.

You can apply for a free needs assessment or someone else can do it on your behalf. They will then check to see if you are eligible to receive free disability supports and services from Whaikaha. To fast track your application, send through any medical or school reports, describing the disability. If you need help with your application, contact their Access team on 0800 TAIKURA or email referrals@taikura.org.nz

Taikura Trust will then call you to organise a needs assessment with one of their support facilitators. It is important that you feel comfortable and prepared to complete the assessment, so they will arrange a date, time and place that best suits you. ¹²

During your assessment, together you will talk about the things you do and what you would like to do with your child, and what's important to your child, yourself, and the people in your life. The facilitator will be respectful and only discuss things that they think will help you to create the best possible support plan.

Your family advocate, social worker, or anyone you feel comfortable with can be at the assessment. They can also organise language assistance if it is needed.

The assessment can take up to one to two hours. The facilitator will use a laptop to capture all the information you provide. The facilitator can read the report back to you and you can have a copy after the assessment.

¹² <https://www.taikura.org.nz/what-we-do/>

Support plan- Using the information on the assessment they will tailor a support plan that meets your child's unique disability needs. This could be a mix of supports offered by Whaikaha and other services in the community¹³

Respite and Carer Support

A 'respite option' is any support or service that helps you to have a break from caring for a person with a disability. Respite options can include:

- asking friends and family to hang out with the disabled person you care for while you take a break.
- employing a support worker to spend time with the person with a disability.
- paying for the person with a disability to do an activity or programme that they enjoy.
- having an overnight break while the person with a disability stays with a friend, family member, support worker or an organisation with skills in caring for people with disabilities.

¹³ <https://www.taikura.org.nz/how-we-do-it/>

Taikura Trust (if Auckland based) can help you get funding for respite and find respite options that will work best for you. The respite supports or services that are allocated by NASCs and funded by the Ministry include:

- Carer Support
- Individualised Funding
- Family Whānau Home Support (a 'buddy' or support worker for a few hours per week)
- Facility-based respite (an overnight stay at a respite house or other facility).

Carer Support

Carer Support is a subsidy that helps you take some time out for yourself. It provides reimbursement of some of the costs of using a support person to care and support a disabled person while you have a break.

Carer Support is available for full-time carers. The number of hours or days that Carer Support is funded for depends on your needs and those of the person you care for. People that can provide support care are; friends, some family members, GlowKids, support workers.¹⁴

Carer Support cannot be used while the full-time carer is at work to pay a parent or partner of the disabled person, while the disabled person is in hospital, or to pay a carer who lives at the same address as the client.

¹⁴ <https://www.whaikaha.govt.nz/types-of-support/support-and-respite-for-carers/>

For more information please visit; <https://www.whaikaha.govt.nz/types-of-support/>

Individualised Funding (IF)

Individualised Funding (IF) is a way of paying for disability support services. IF gives the families of children with special needs a way of directly managing their disability supports. This can range from engaging support workers and planning how to use your supports, to employing your own care providers and managing all aspects of service delivery. IF is administered through a contracted IF host (list of Auckland IF hosts below).¹⁵

IF is available for people who:

- Have been allocated Home and Community Support Services by their local NASC (Taikura Trust)
- Have had a discussion with the NASC to determine if IF is a suitable option for you.

IF can only be accessed via a referral from NASC (Taikura Trust). If IF is the suitable option for you, then a referral can be made to the person's preferred IF host.

IF can cover:

¹⁵ Whaikaha, your guide to Individualised Funding

- purchasing household management and personal care provided by support workers (where your employees can include family members, contracted personnel or organisations) and pay costs relating to the employment of support workers
- purchasing respite through support workers or other suitable alternatives so that the full-time carer can have a break (including school holiday programmes or facilities). You cannot use IF to pay parents and spouses for respite care.

IF doesn't cover:

- Costs related to medical supplies
- Equipment
- Home renovations
- Leisure
- Recreation (activity done for enjoyment when one is not working.)
- Personal or family costs
- To increase the personal income of an individual or family

You can get IF when you:

are eligible for Ministry-funded services

have talked to a NASC to see whether IF is suitable for you

If you want to use IF to manage your support allocations, you must do this through an IF Host organisation. These are organisations that Whaikaha contracts to support people using IF.

Your IF Host

- helps you understand IF,
- helps you learn how to organise, set up and manage your supports,
- administers payments for the support services,
- helps you manage your responsibilities – this includes reporting back to them on the support hours you have used, so that they can be paid for.

Your IF Host must also check that the service is working well and report back to the Ministry about it.

If you want your IF Host to be responsible for recruiting, training and paying your support workers and possibly managing the legal aspects of your service, your IF Host may do so for an extra fee that they set and you pay.

Some IF Hosts in the Auckland region

Access - Main regional office, 60 Mt Eden Rd, phone: 0800 284 663,

<https://www.access.org.nz/Home-Community-Services/Disability/Disability-Support>

Lifewise - (Auckland Health and Disability Services) Gordon House, 227 Mt Eden Road, Mt Eden, phone: 09 623 7631

<https://www.lifewise.org.nz/services/health-disability-services/disability-services/>

Enliven - (Presbyterian Support Northern), centres in Auckland South, Auckland North & West and Auckland Central 0800 43 36 548 36,

<https://www.enlivennorthern.org.nz/services/enhanced-individualised-funding>

Manawanui - 2 Parkhead Place, Rosedale, Auckland, 0508 462 427,
<https://manawanui.org.nz/services/mana-whaikaha/>

Vision West – operates in and around Auckland, 0800 222 040
<https://www.homehealthcare.org.nz/service/individualised-funding>

More information from Whaikaha visit:

<https://www.whaikaha.govt.nz/assessments-and-funding/types-of-funding/>

8. Ministry of Social Development (MSD)

The Ministry of Social Development (MSD) has multiple roles in the development of the New Zealand community with an overall aim to help create successful individuals, families, and communities.

Work and Income

MSD administers Work and Income (previously known as WINZ) whose role is to assist with income support (based on eligibility criteria) and employment services for NZ residents.²

Financial supports

Work and Income administer some financial supports for people with disabilities and their families including:

- Supported living payment
- Child disability allowance (not income tested)
- Childcare subsidy
- Working for families tax credits
- Community services card (not income tested)
- National travel assistance
- Assistance for hardship

For more information visit: <https://www.workandincome.govt.nz/>

phone: 0800 559 009

9. Accident Compensation Corporation (ACC)

Accident Compensation Corporation (ACC) provides 24 hour, 7 days per week no-fault personal injury cover for all New Zealanders. ACC also administers support for victims of accidental injury / disabilities. ACC assistance is dependent on individual needs and circumstances. If your child's disability is a result of accidental injury, it is likely the doctor or paediatrician will refer you to ACC for ongoing assistance. You may receive assistance with personal cares and other supports to assist you to continue caring for your child at home. If your child is eligible for ACC funded assistance, they may not be eligible for Whaikaha or MOE funded Disability Support services.²

For more information please visit: www.acc.co.nz ,Phone: 0800 101 996 (for claims)

10. Non-Government Organisations (NGOs)

Non-government organisations (NGOs) are not-for-profit, independent, and community-based organisations which are not affiliated with central or local government (however an NGO may receive funding support from the Government). NGOs provide a wealth of information regarding services, support groups, and networking opportunities for families. Some service provider organisations are classified as NGOs, for instance:

- Disability Connect
- Royal NZ Foundation of the Blind (RNZFB)
- IHC
- Halberg Trust
- Variety- The Children's Charity of New Zealand

There are many support groups and organisations operating in the disability sector in Auckland. Some support organisations are disability specific such as:

- Autism NZ
- Altogether Autism
- Down Syndrome Association
- Cerebral Palsy Society
- Dyspraxia Support Trust
- Brain Injury Association

Other disability support organisations are not specific to one particular disability such as:

- Disabled Persons' Assembly
- Parent to Parent
- Carers NZ

Not all of the organisations above are available nationally. To find out which organisations are closest to you, you may search them on the WEKA (What Everyone Keeps Asking) website on www.weka.net.nz. Alternatively, you may be able to ask your local Disability Information and Advisory Service. Many NGOs can be accessed free of charge; however, some may charge for membership.²

11. Grants and supports for young people with disabilities.

There are organisations in New Zealand that give grants that help to pay for things like equipment, education and activities that increase your child's independence. Organisations usually accept applications at certain times during the year. These are called funding rounds. To support your application, you might need a letter from a health professional, teacher, or social worker.

Here are some places to start.

Brain Injured Child Trust - funding for fees for children with brain injuries (Cerebral Palsy etc.,) who are undergoing home-based therapy (Conductive Education included).

Cerebral Palsy Society – have a range of programmes including Get This (to purchase small items that are needed to help manage the effects of living with their Cerebral Palsy), Get Physical (has the aim of funding physical programme to enable you to maintain or improve your physical ability and fitness, which can be used for GlowKids fees, RDA fees (Riding for the Disabled), and most swim schools). Cerebral Palsy Society also offers grants for individuals to help with independence or quality of life. For more information please visit:

<https://cerebralpalsy.org.nz/member-services/programmes/>

Jubilee Trust Grant (CCS) - For a broad range of purposes to fit the needs of the applicant. Typically up to a maximum of \$2,500. For more information please visit

<https://www.ccsdisabilityaction.org.nz/assets/JubileeTrustPamphlet.pdf>

Lottery Grant - If you need a vehicle or mobility or communication equipment. For more information please visit: [https://www.communitymatters.govt.nz/lottery-](https://www.communitymatters.govt.nz/lottery-individuals-with-disabilities/)

[individuals-with-disabilities/](https://www.communitymatters.govt.nz/lottery-individuals-with-disabilities/)

Variety - for those who require an extra hand, they provide funding for additional needs like medical or mobility equipment, therapeutic care, tutoring, or a digital device. For more information please visit: <https://www.variety.org.nz/how-we-help/>

Wilson Home Trust - The Wilson Home Trust offer a range of grants that support a need, activity, or piece of equipment that will enhance the life of a child or young person (under the age of 22) with a physical disability. They also have grants available for the child's whanau as they acknowledge the importance of the well-being of all whanau in supporting a child with a disability. For more information please visit: <https://www.wilsonhometruster.org.nz/grants/applynow/>

12. Directory Not-For-Profits

GlowKids

www.glowkids.org.nz Ph: 09 845 8070

Autism NZ

www.autismnz.org.nz Ph: 0800 AUTISM (288 476)

Altogether Autism

www.altogetherautism.org.nz Ph: 0800 273 463

Brain Injured Children Trust

www.braininjuredchildrentrust.co.nz Ph: 07 578 9694

Carers NZ

www.carers.net.nz Ph: 0800 777 797

Cerebral Palsy Society

www.cerebralpalsy.org.nz Ph: 0800 503 603

CCS Disability Action

www.ccsdisabilityaction.org.nz Ph: 0800 227 2255

Disability Connect

www.disabilityconnect.org.nz Ph: 09 636 0351

Hallberg Foundation

www.halberg.co.nz Ph: 0800 HALBERG

IHC

www.ihc.org.nz Ph: 0800 442 442

Mapura Studios

www.mapurastudios.org.nz Ph: 09 845 5361

New Zealand Foundation for Conductive Education

www.nzfce.org.nz Ph: 0800 169 323

New Zealand Riding For the Disabled (RDA)

www.rda.org.nz Ph: 0800 469 732

Parent 2 Parent

www.parent2parent.org.nz Ph: 0508 236 236

Raukauri Music Therapy Trust

www.rmtc.org.nz Ph: 09 360 0889

StarJam

www.starjam.org.nz Ph: 09 300 6257

Wilson Home Trust

www.wilsonhometruster.org.nz Ph: 0800 948 787

13. Directory for Conductive Education Providers around NZ

Auckland:

Glow Kids

13 Coyle Street

PO Box 16291

Sandringham, Auckland 1351

Ph: 09 845 8070

Email: info@glowkids.co.nz

website: www.glowkids.org.nz

Neuro Connections (Adults)

2 Claude Brooks Drive, PO Box 21 504

Henderson, Waitakere City 0650

Ph: 09 836 6830

Email: admin@neuroconnection.org.nz

website: www.neuroconnection.org.nz

Waikato:

Conductive Education Waikato Trust

Early Intervention Centre, Corner Anson Ave and Fairfield Road

PO Box 12066 Chartwell Square, Hamilton 3248

Ph: 07 855 7013

M: 027 855 7013

Website: www.conductiveeducationwaikato.nz

Woodstock Primary School

21 Woodstock Road, Hamilton 3214

Email: principal@woodstock.school.nz

Email: bronwynn@woodstock.school.nz

website: www.woodstock.school.nz

Taranaki:

Conductive Education Taranaki

Westown School, 41 Sanders Ave, New Plymouth

Ph: (06) 929 3504

Email: rachel@conductivetaranaki.org.nz

website: www.conductivetaranaki.org.nz

Wellington:

Conductive Education Wellington Trust

Wheatley Street PO Box 35 078

Naenae, Wellington 5041

Ph: 04 577 3480

Email: cewt@xtra.co.nz

website: www.cewellington.org.nz

Naenae Primary School Conductive Education Unit

Wheatley Street Naenae, Wellington 5041

Ph: 04 567 8117

Email: office@naenae-primary.school.nz

Christchurch:

Conductive Education Canterbury Early Intervention Centre

PO Box 9230, Tower Junction

22 Brougham St

Christchurch 8149

Ph: 03 372 1399

Email: cecanterbury@xtra.co.nz

website: www.cecanterbury.org

Addington Te Kura Taumatua Conductive Education

22 Brougham St

Christchurch 8025

Ph: 03 366 2909

Email: principal@addington.school.nz

website: www.addington.school.nz

Cashmere High School Conductive Education

172 Rose Street, Cashmere

Christchurch 8024

Ph: 03 332 9129

Email: hjj@cashmere.school.nz

website: www.cashmere.school.nz/Academic-1/Special-Needs-Te-Pukenga-1

Adult Conductive Education Trust

PO Box 9329, Tower Junction, Christchurch

Ph: 03 372 1399

Email: office@acet.org.nz

Dunedin:

Conductive Education Otago

3 George Street Port Chalmers 9023

Otago, Dunedin

Ph: 021 111 43156

Email: info@ceotago.nz

Website: www.ceotago.nz

Invercargill:

Conductive Education Southern Charitable Trust

198 Esk Street, Invercargill 9810

Ph: 03 218 8766

Email: manager@cesouthland.org.nz